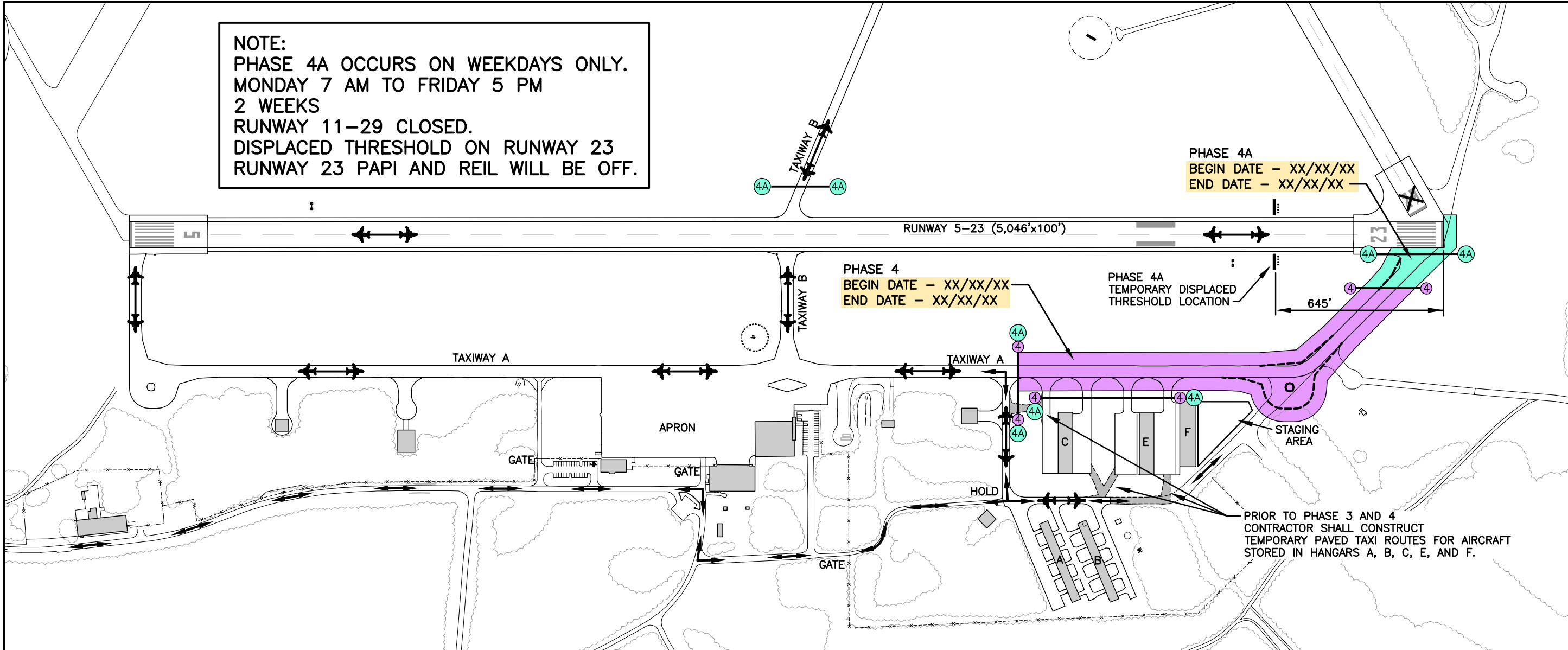


S:\Projects\K\Keystone Airpark Authority\60551976\_RehabTWAB\Design\900-Work\910 CAD\20-SHEETS\PHASE 4-4A.dwg 11/01/2018 10:57

**NOTE:**  
 PHASE 4A OCCURS ON WEEKDAYS ONLY.  
 MONDAY 7 AM TO FRIDAY 5 PM  
 2 WEEKS  
 RUNWAY 11-29 CLOSED.  
 DISPLACED THRESHOLD ON RUNWAY 23  
 RUNWAY 23 PAPI AND REIL WILL BE OFF.

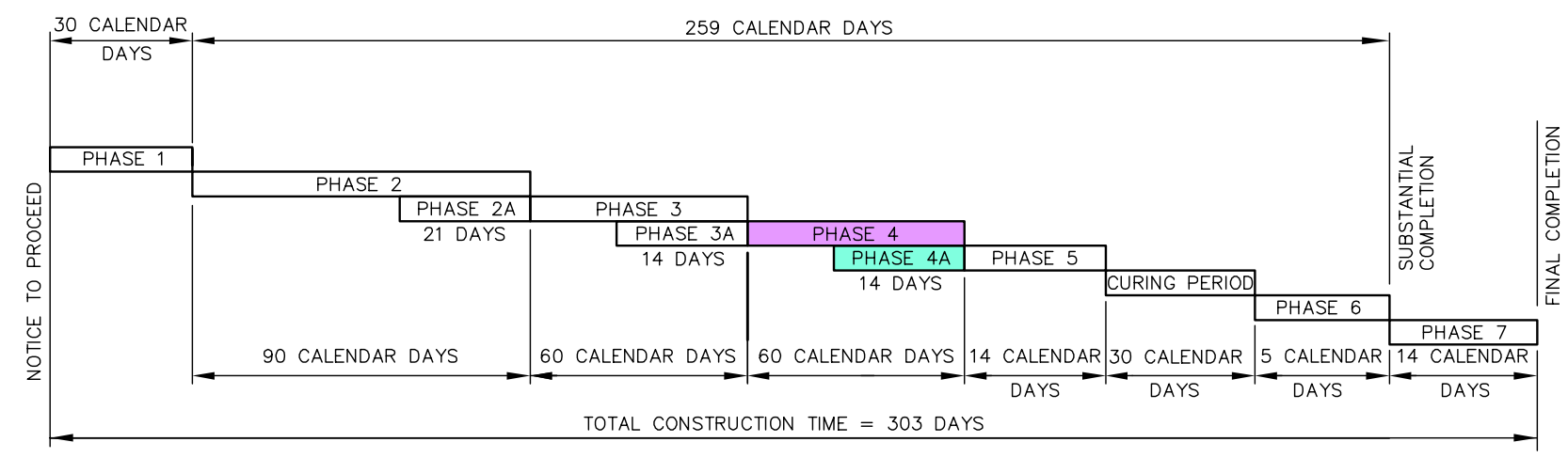


PHASE 4A  
 BEGIN DATE - XX/XX/XX  
 END DATE - XX/XX/XX

PHASE 4  
 BEGIN DATE - XX/XX/XX  
 END DATE - XX/XX/XX

PHASE 4A  
 TEMPORARY DISPLACED  
 THRESHOLD LOCATION

PRIOR TO PHASE 3 AND 4  
 CONTRACTOR SHALL CONSTRUCT  
 TEMPORARY PAVED TAXI ROUTES FOR AIRCRAFT  
 STORED IN HANGARS A, B, C, E, AND F.



**CONSTRUCTION PHASING DIAGRAM**  
 N.T.S.

**LEGEND:**

- (X-X) LOW PROFILE BARRICADE (NUMBER INDICATES PHASE NUMBER)
- ↔ CONTRACTOR'S HAUL ROUTE
- X VINYL RUNWAY CLOSURE X (LOCATION AND PLACEMENT WILL BE DETERMINED BY PHASE)
- ↔ AIRCRAFT ACCESS ROUTE

