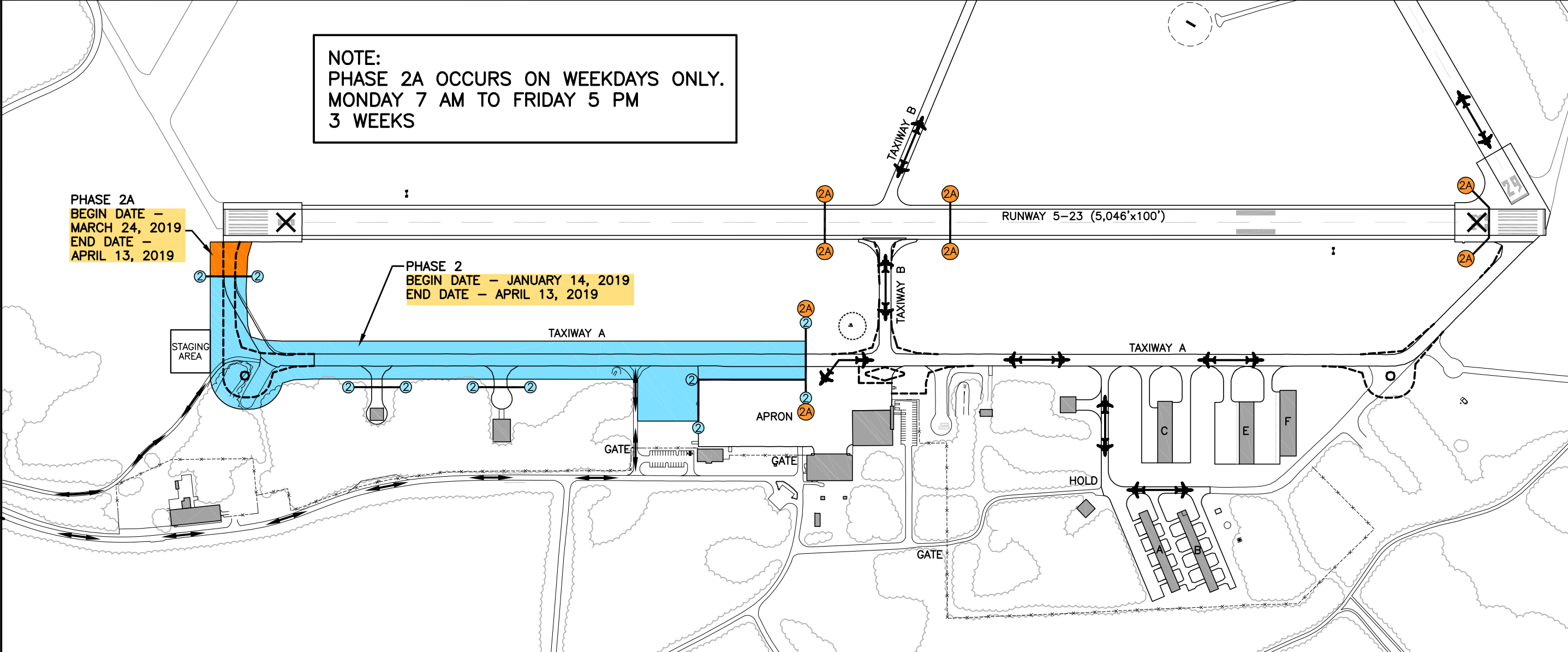


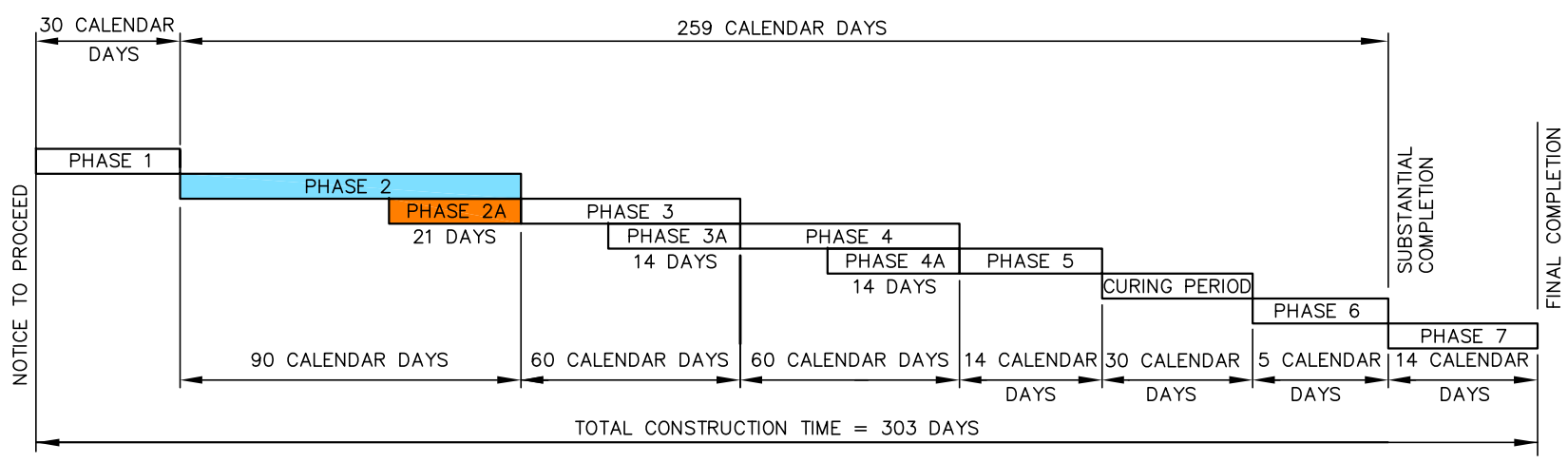
\\URSTampa.us:rs\Projects\Tampa\Projects\Keystone Airpark Authority\60551976_Rehab\WAB\Design\900-Work\910 CAD\20-SHEETS\PHASE 2-2A.dwg 01/03/2019 15:42

NOTE:
 PHASE 2A OCCURS ON WEEKDAYS ONLY.
 MONDAY 7 AM TO FRIDAY 5 PM
 3 WEEKS



PHASE 2A
 BEGIN DATE - MARCH 24, 2019
 END DATE - APRIL 13, 2019

PHASE 2
 BEGIN DATE - JANUARY 14, 2019
 END DATE - APRIL 13, 2019



CONSTRUCTION PHASING DIAGRAM
 N.T.S.

LEGEND:

- (X) LOW PROFILE BARRICADE (NUMBER INDICATES PHASE NUMBER)
- ↔ CONTRACTOR'S HAUL ROUTE
- X VINYL RUNWAY CLOSURE X (LOCATION AND PLACEMENT WILL BE DETERMINED BY PHASE)
- ↔ AIRCRAFT ACCESS ROUTE

